

VERSA 110 Vial Filling Workstation

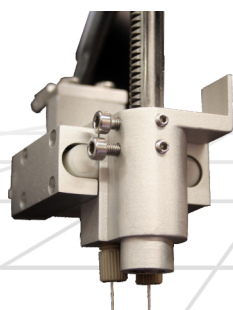
Manual addition of reagents to small vials and bottles is a tedious, time consuming and error prone process. Manual methods have difficulty effectively meeting high throughput needs requested by reagent companies. The VERSA™ 110 Vial Filling workstation is a bench-top automated liquid handling workstation that provides an efficient, high throughput solution suitable for reagent preparation and other multi-dispensing applications.

Aurora's dedicated lab automation solutions improve accuracy, versatility and reliability. VERSA 110 Vial Filling machines may be used to fill vials and bottles with liquids, suspensions and viscous materials. Aurora's automated vial filling machine has two adjustable ReagentDrop pins, allowing support for a growing span of liquid products and fill sizes such as multi-well microplates, micro tubes, vials, and reagent bottles.

Tight industry standards and growing statistical process control expectations require automated vial filling workstations to provide an acceptable confidence value (CV) regarding delivered reagent volumes. Aurora's VERSA 110 Vial Filling Workstation is designed to meet or exceed these requirements for dispensing reagents or free flowing to low viscosity liquids into different types of containers in volumes ranging from the size of sub-microliter to milliliter.

This high-throughput workstation increases sample numbers while decreasing sample volumes, conserves expensive reagents, eliminates concerns associated with volumetric variations caused by handling errors and automates all associated repetitive pipetting protocols.

LIQUID HANDLING MODULE



**Dual Channel
ReagentDrop Module**

FEATURES

- Single robotic arm with 2 ReagentDrop channels
- Distance between ReagentDrop channels is adjustable to suit different sized vials
- ReagentDrop channels can be connected to the same source reagent bottle or to individual reagent bottles
- No pipetting tips required
- Volume range: 1 µL-1000 µL (contact Aurora regarding larger volumes)
- 8 deck positions
- Compatible with organic and aqueous reagents
- Operated by user-friendly VERSAware software

APPLICATIONS

- Reagent may be dispensed into vials / bottles
- Enables high speed dispersion of bulk reagents
- Adjustable two channel ReagentDrop allows:
 - High-speed addition of same reagent into two separate vials
 - Simultaneous mixing of separate reagents into same vial
 - Addition of separate reagents into different vials simultaneously

BENEFITS

- No-splash feature removes threat of cross-contamination errors
- Reduces cost by eliminating pipette tip consumption costs
- HEPA / UV / Fluorescent light enclosure (optional)

THROUGHPUT

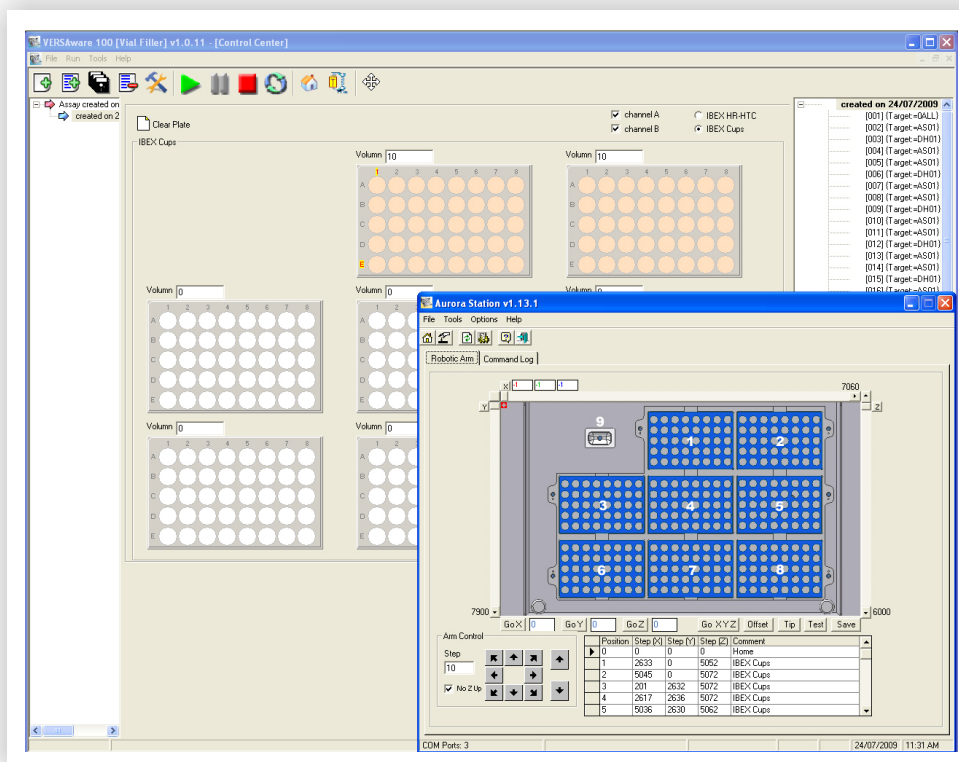
- 1 sec / vial (50 µL)

**VERSA 110 Vial
Filling Workstation**



SOFTWARE & DECK

Various tabs within the VERSAware software window enhance the underlying versatility of the workstation by allowing the user to perform diverse liquid handling functions. Customized methodologies are easy to create and load into the library of stored protocols using import and export functions within the software.



SPECIFICATIONS

VOLUME	1 µL - 1000 µL
PRECISION	CV value <1% at 50 µL
ROBOTIC POSITIONS	±50 µm (all axes)
DECK CAPACITY	<ul style="list-style-type: none"> • Eight plate / rack positions • Reagent block (cooling / heating) • Accommodates following vessels of differing heights/sizes: <ul style="list-style-type: none"> • 96 / 384 well plates • Tubes / vials • May also be customized for other container types (please contact your local representative)
PIPETTE TIPS	None required
PIPETTING HEAD	Single robotic arm equipped with two (2) ReagentDrop channels (adjustable spacing)
ACCESSORY OPTIONS	<ul style="list-style-type: none"> • HEPA / UV / Fluorescent light enclosure • Other adaptors available - check with your local representative
THROUGHPUT	1 sec / vial (50 µL)
SOFTWARE	Customized user-friendly VERSAware software featuring simple on-screen prompts and drop-down menus
COMPUTER SYSTEM	Desktop PC with LCD monitor and Windows operating software
DIMENSIONS	W 60 x L 60 x H 45 cm / 23.6" x 23.6" x 17.7"
WEIGHT	35 kg

NOTE: Instrument specifications may change without notice as an ongoing effort of product improvement.

North American Sales: Aurora Biomed Inc.
1001 East Pender Street
Vancouver BC Canada V6A 1W2
Phone: 1.800.883.2918 • 604-215-8700
Email: info@aurorabiomed.com
Website: www.aurorabiomed.com



International Sales: Aurora Instruments Ltd.
1001 East Pender Street
Vancouver BC Canada V6A 1W2
Phone: 604-215-8700 • Fax: 604-215-9700
Email: info@aurora-instr.com
Website: www.aurora-instr.com